



399 Lakeview Avenue
Clifton, NJ 07011
(877) 233-4877 toll-free
(973) 772-8507 direct
(973) 772-4454 fax
www.bdecomputer.com
sales@bdecomputer.com



InfiniTime 7.0 Labor Management System

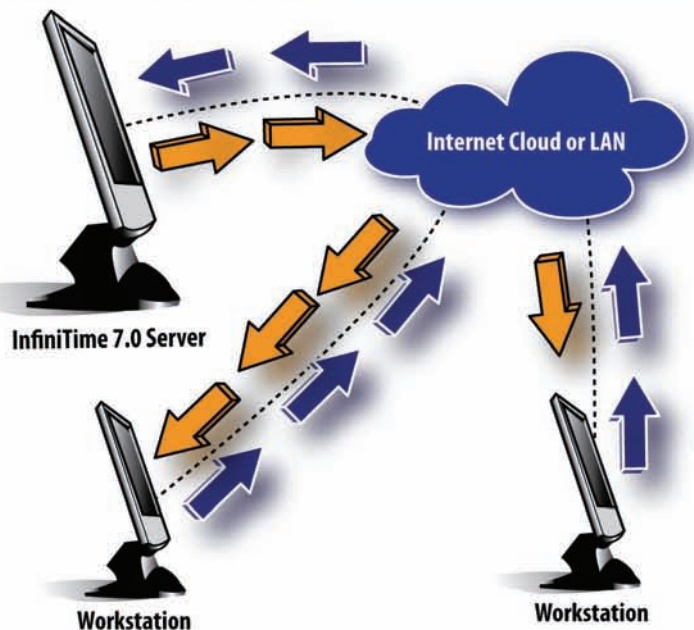
InfiniTime™ 7.0 has now integrated labor management with the power of the internet. Employees simply click on an icon that sits on their desktop or a web address in their favorites list and type in an ID and password. Managers can view and or edit user activity as well as print reports and export time card data. All the features of InfiniTime are at your fingertips. This is done without having any of the software actually installed on your computer. This is not a hosted solution. Instead the software is accessed by your computer on the companies server.

The InfiniTime™ 7.0 Labor Management Software is a true client/server solution based on an Oracle database architecture and ASP.net. InfiniTime™ utilizes a relational database on an Oracle database server. All the software modules in InfiniTime™ share the same database and are integrated in this SQL environment.

Traditional Time & Attendance software processes raw data at the PC. This can be very time consuming and can result in data file corruption. This database technology is not scalable and does not provide the capability for ad-hoc reporting and querying.

Without a client/server application, workstations typically have to search through a large portion of the data files to find applicable information for reporting, editing, importing, etc. The result is increased network traffic, as well as increased workstation processing. This typically means a significant degradation in performance and an increase in wait time.

how it works



features & extras

- Browser based solution
- Manage employees from the comfort of home
- No additional database server software to buy
- Significant gains in processing speed
- Dramatic decrease in network traffic
- Database queries are processed on the server
- Works just like a windows program in a browser
- Works on slow connections
- Multiple remote connections

ORACLE INCLUDED!

InfiniTime 7

save time & money

- Oracle database technology embedded in software
- Dramatically reduces chances of data corruption
- Eliminates manual totalling of hours
- Eliminates errors in calculation
- Eliminates time card purchase and preparation
- Stops unauthorized overtime
- Automatic payroll interface for no re-entry of data

control

- Eliminates employee time theft
- Missing punch report
- Attendance reports
- Implements grace periods
- Access Control Module for secure facility access

analysis

- Records and summarizes lateness
- Analyze non-worked time
- Tracks benefit days
- Two standard accrual categories
- Spots trends and patterns
- Provides information for personnel files

crystal reports

- Highly detailed time card reports
- Useful schedule reports
- Management reports for analysis
- Many more...

more...

- Advanced accruals with the Accruals Plus Module
- E-mail reporting capability
- Standard "In/Out" board
- Automatic daylight savings time corrections
- Unlimited multi-user network option

*infinite
growth,
infinite
control*



technical requirements

Web Server Machine

OS: Windows 2000 Service Pack 4
Windows XP Professional Service Pack 2
Windows 2003 Server Service Pack
Windows Vista Business or Ultimate

CPU: Pentium IV, 2 GHz or higher

RAM: 1 GB or higher

Free HD Space: 10 GB or higher

Internet Information Server: Microsoft Internet Information Services version 5 or higher

Internet Browser: Internet Explorer 6.0 or higher

Client Machine

OS: Windows 2000 Service Pack 4
Windows XP Professional or Home
Windows 2003 Server
Windows Vista All Versions

CPU: Celeron, 1.45 GHz or higher

RAM: 512 MB or higher

Internet Browser: Internet Explorer 6.0 or higher